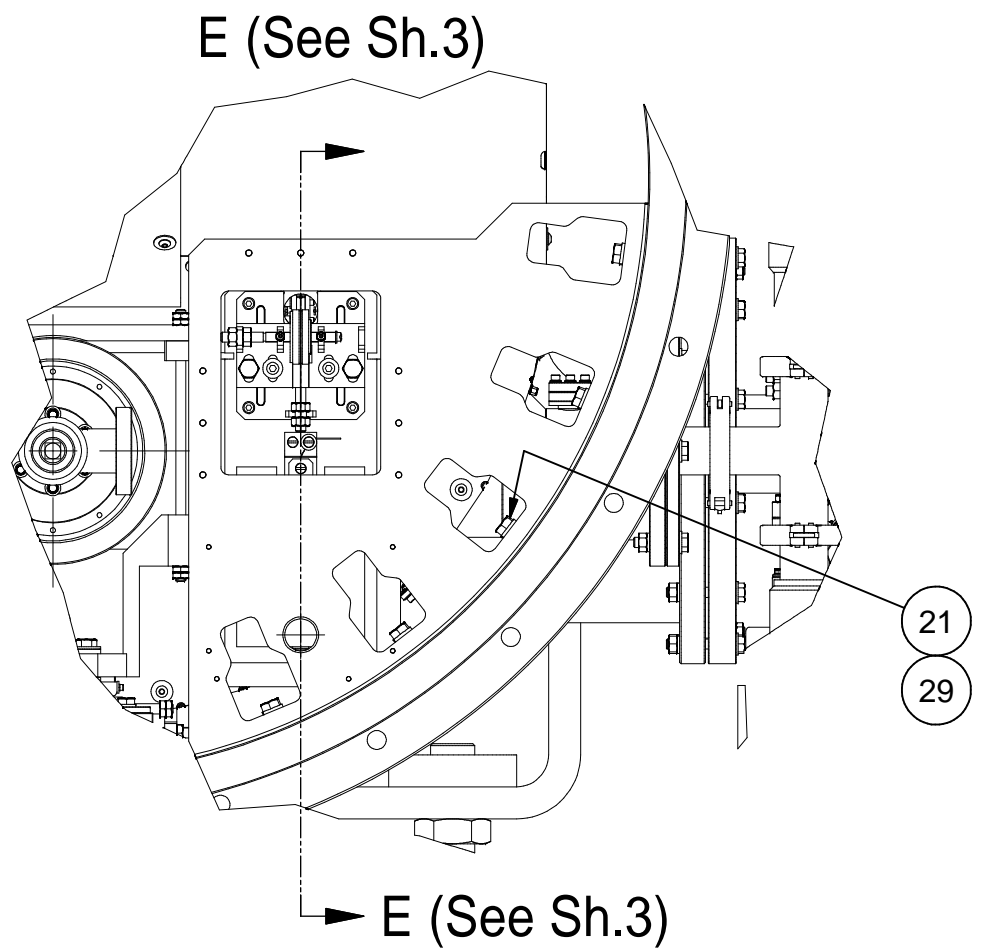
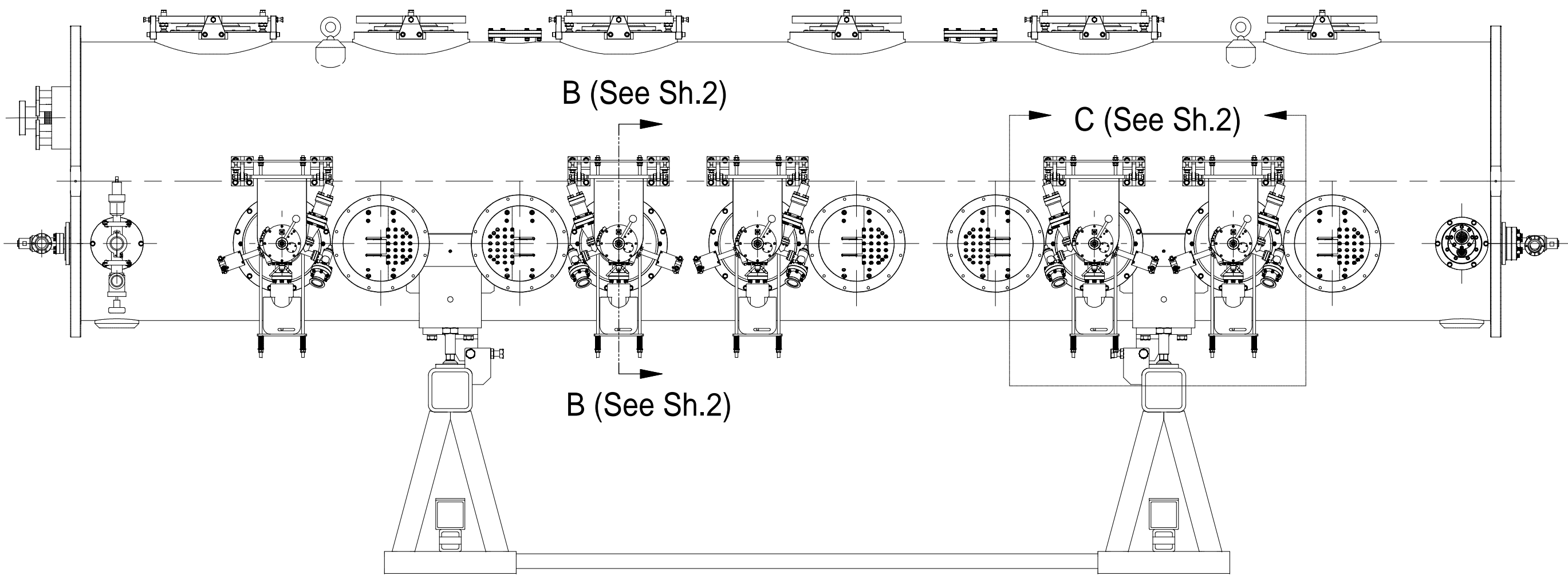
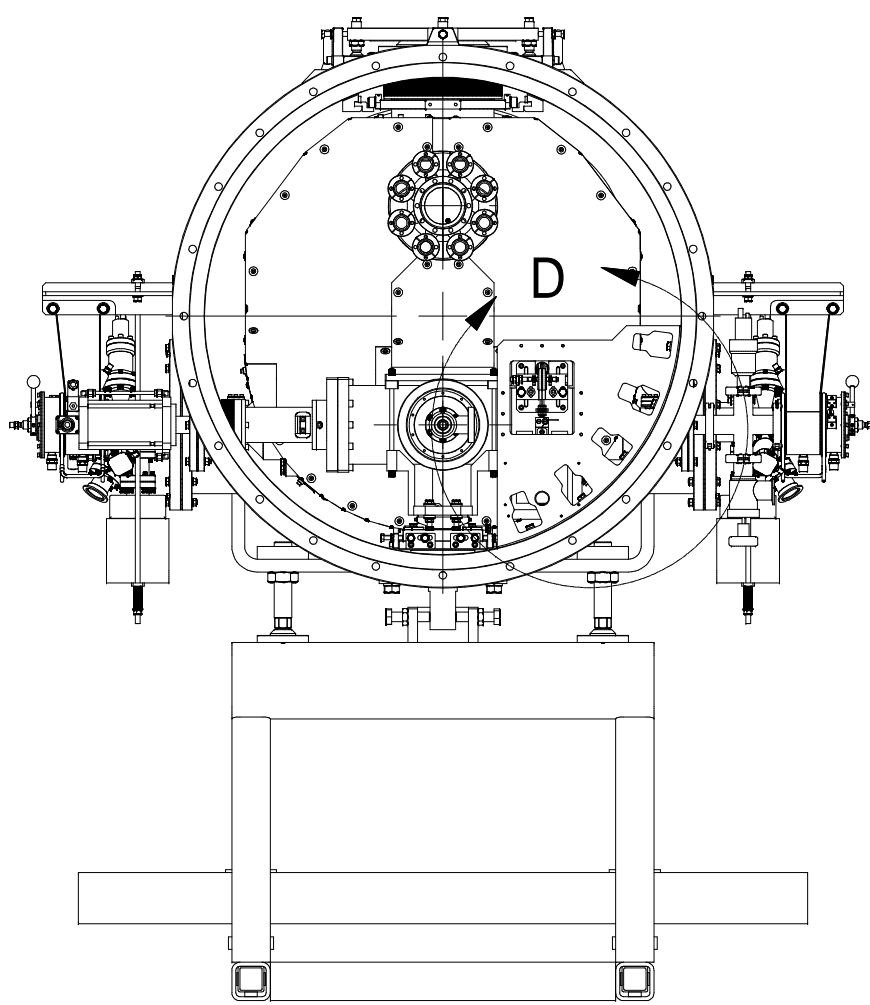
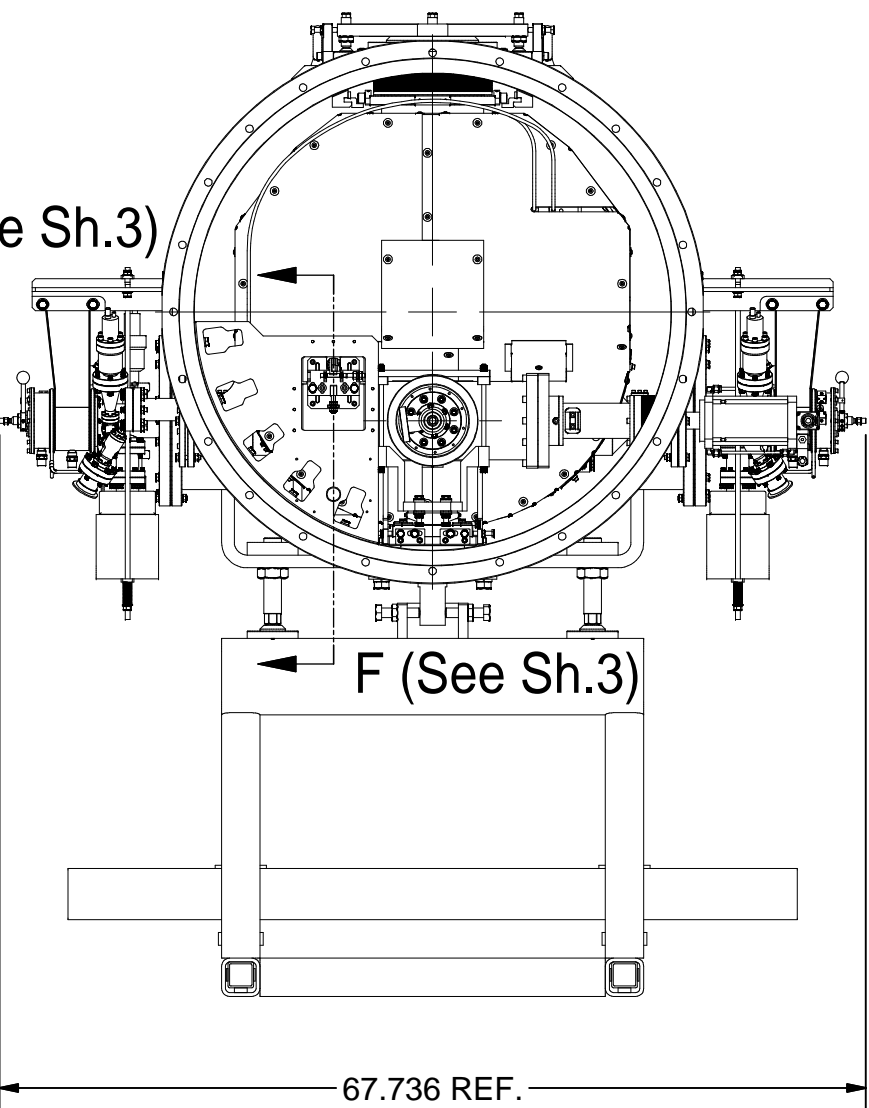


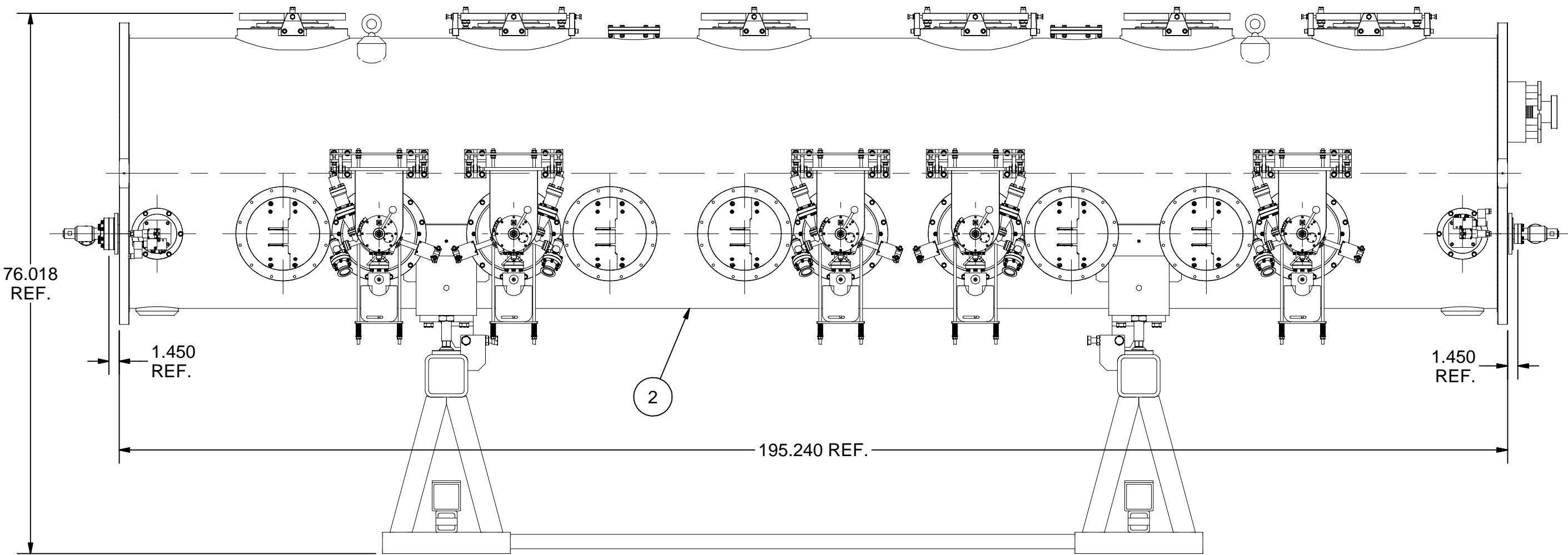
REVISIONS				
SYM.	ZONE	DESCRIPTION	DATE	APP.



DETAIL D
SCALE 1:6

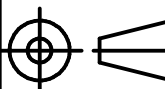



VIEW A-A
SCALE 1:15

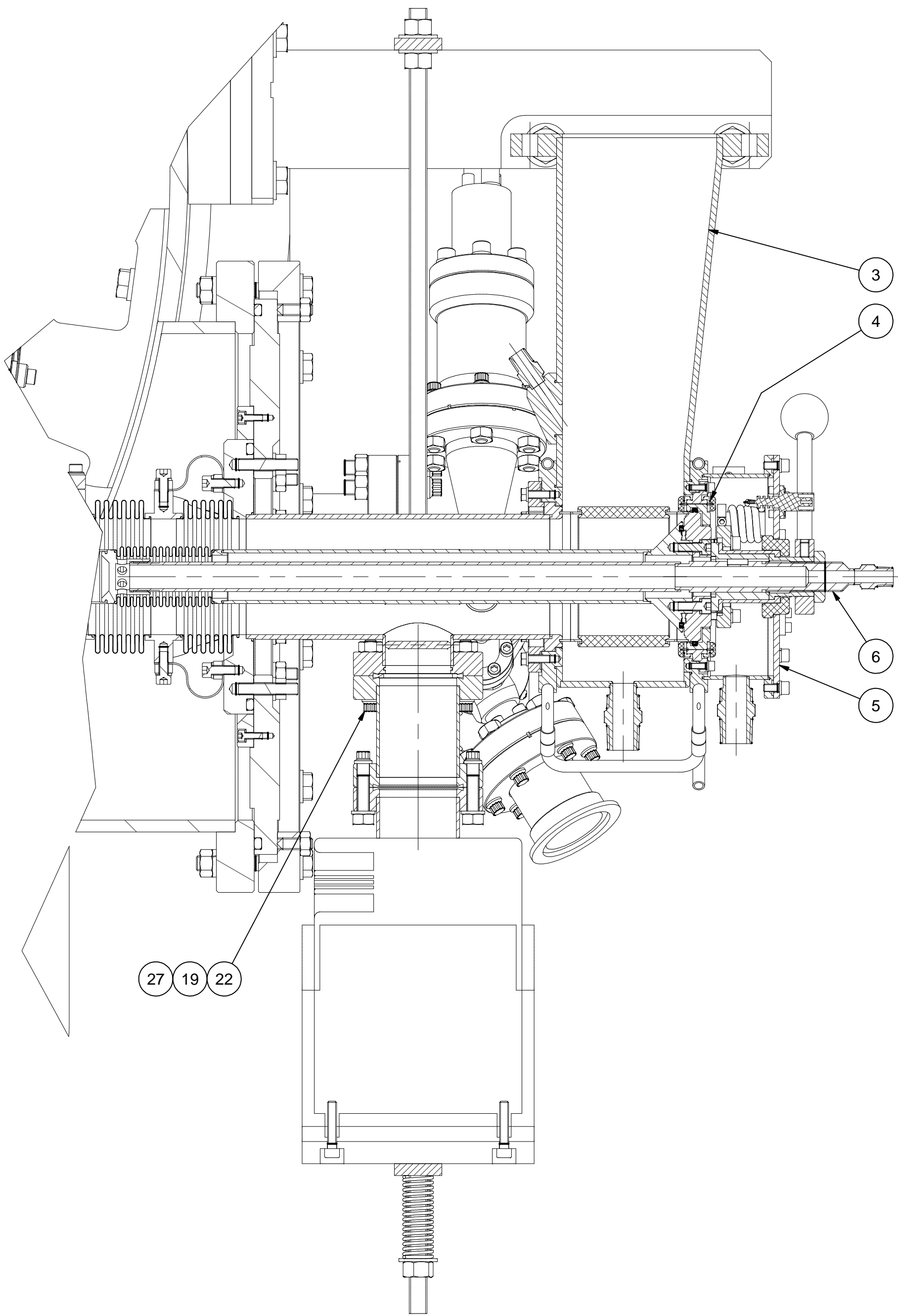


1 ASSEMBLY, STEP 13
FILE NAME: 7102-102
SHEET NO.: 1
DFT. SCALE: 1:15
MATERIAL:
QTY: 1
NOTES:

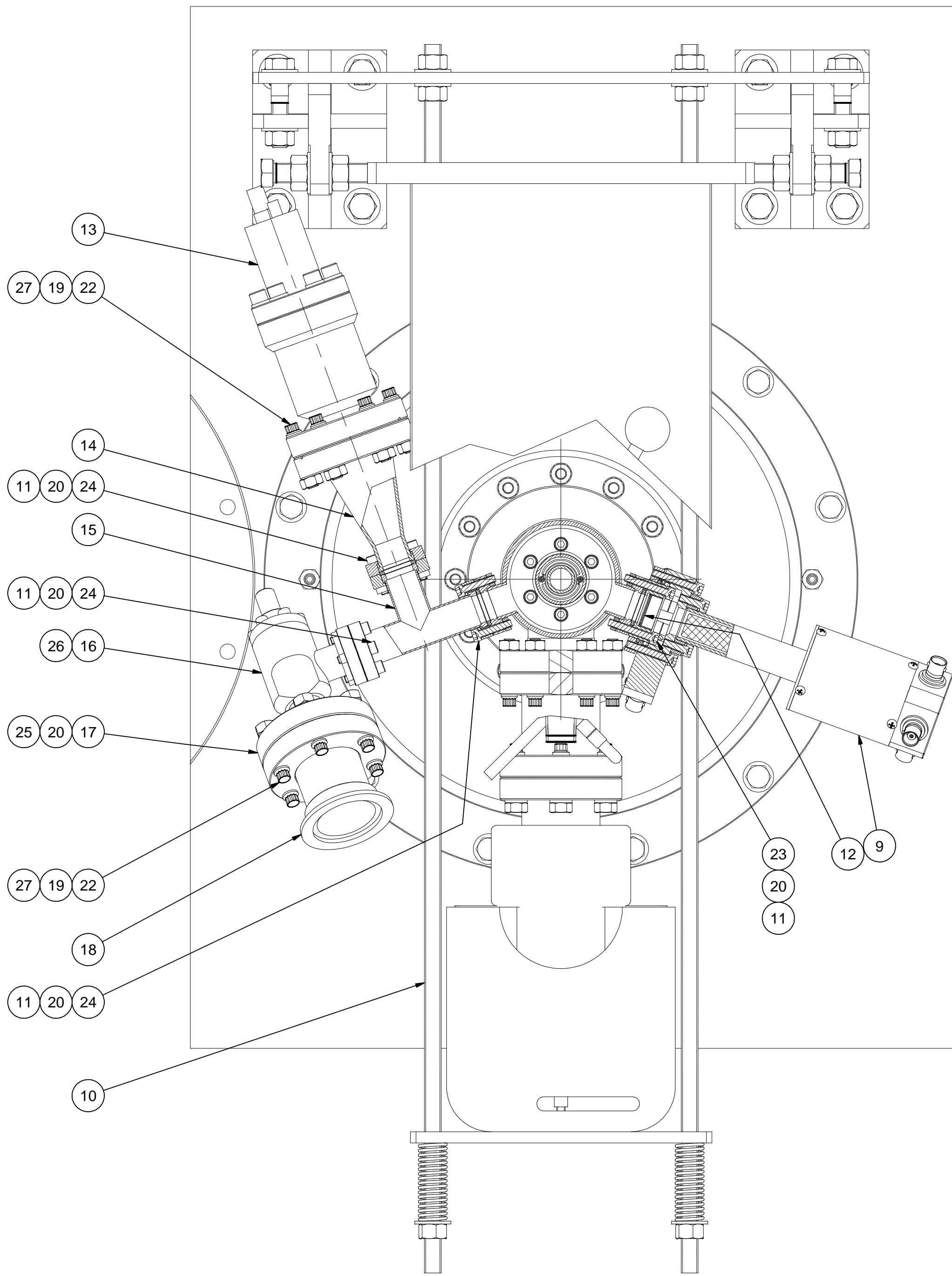
30	Purchased	#8 Washer, 0.375 OD, 316 SS	8		McMaster-Carr's 90107A010	
29	Purchased	3/8 Spring Washer, SS	10		McMaster-Carr's 92146A031	
27	Purchased	1/4-28 Hex Nut for CF Flanges	180		Varian's FB-0275 set, or equiv.	
26	Purchased	#8-32 x 1/2 Socket Head Cap Screw, Dicronited	8		McMaster-Carr's 92185A194	
25	Purchased	#8-32 x 1/2 Socket Head Cap Screw, Silverplated	60		Varian's FB-0133-TS set, or equiv.	
24	Purchased	#8-32 x 3/4 Socket Head Cap Screw, Silverplated	180		Varian's FB-0133-CS set, or equiv.	
23	Purchased	#8-32 x 1 Socket Head Cap Screw, SS	60		McMaster-Carr's 92196A199	
22	Purchased	1/4-28 x 1-1/4 12-point Bolt, Silverplated	180		Varian's FB-0275-C12S, or equiv.	
21	Purchased	3/8-16 x 1-1/4 Hex Head Cap Screw, SS	10		McMaster-Carr's 92240A354	
20	Purchased	1-1/3" CF Gasket	50		Varian's FG-0133-CU, or equiv.	
19	Purchased	2-3/4" CF Gasket	30		Varian's FG-0275-CU, or equiv.	
18	Purchased	2-3/4" CF to NW-40 Adapter	10		MDC's #730003	
17	Purchased	Zero Length Reducer, 2.75"x1.33"	10		MDC's #150001	
16	Purchased	3/4" Right Angle Valve with 1-1/3" CF Flanges	10		Varian's #951-5014	
15	Purchased	1-1/3" CF Tee	10		MDC's #404000	
14	Purchased	CF 2-3/4" to CF 1-1/3" Conical Reducer	10		MDC's #402030	
13	Purchased	HPS Cold Cathod Sensor, Series 421	10			
12	Purchased	1-1/3" CF Flanged Zero-Length Glass Viewport	10		Kurt J. Lesker's #VPZL-133	
11	7102-024 (Sh. 1)	8-32 NUT PLATE	40			
10	7102-044	INPUT COUPLER PUMP SUPPORT	10			
9	7104-034	ARC DETECTOR	10			
8	7110-011 (It.6)	WPM SUPPORT, OTHER SIDE ASM	1			
7	7110-011 (It.2)	WPM SUPPORT, WEIGHT SIDE ASM	1			
6	100.700.000	ADJUSTMENT MECHANISM	10			
5	100.800.000	INTERFACE BOX COVER	10			
4	100.200.000	CAPACITOR	10			
3	100.600.000	WAVEGUIDE INTERFACE BOX	10			
2	7102-101	ASSEMBLY, STEP 12	1			
1	7102-102 (Sh. 1)	ASSEMBLY, STEP 13	1			

	ITEM	DWG. NO.	DESCRIPTION			G1	G2	G3	REMARKS	REV.
							QUANTITY			
D	PRINT DISTR.	PLOT DATE: 2/1/08 CAD FILE NAME: 7102-102.idw								
SH. NO. 1 OF 3	7102-102	CR-1	UNLESS OTHERWISE SPECIFIED: DIMENSIONS ARE IN INCHES; TOLERANCES ON: .0 ± .02 .00 ± .010 .000 ± .005 FRACTIONS ± 1/32 ANGLES ± 0.5° ALL SURFACES ✓	CORNELL UNIVERSITY  CORNELL UNIVERSITY Floyd R. Newman Laboratory Ithaca, NY 14853 LABORATORY FOR ELEMENTARY-PARTICLE PHYSICS						
				ERL INJECTOR CRYOMODULE ASSEMBLY, STEP 13						
				ASSEMBLY, STEP 13: ORTHO VIEWS, DETAIL D						
REV.	CHECKED BY: VM		DRAWN BY VM	DRAWN FOR M.Liepe	DATE 1/28/08	SCALE	D	7102-102	REV.	
	APPROVED BY: VM		SH. NO. 1 OF 3							

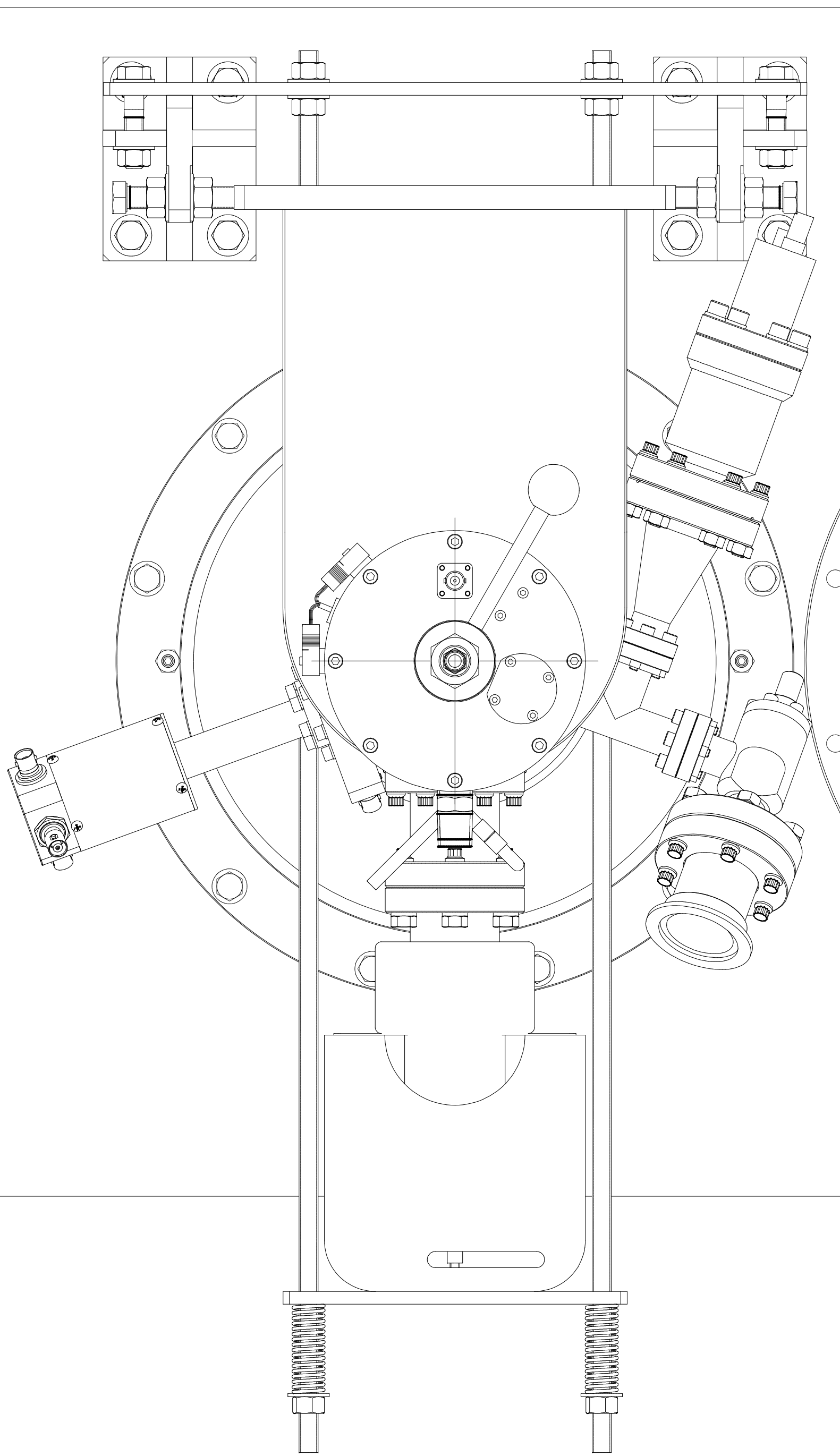
REVISIONS			
SYM.	ZONE	DESCRIPTION	DATE APP.




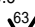


SECTION B-B
(SEE SH. 1)
SCALE 1:2

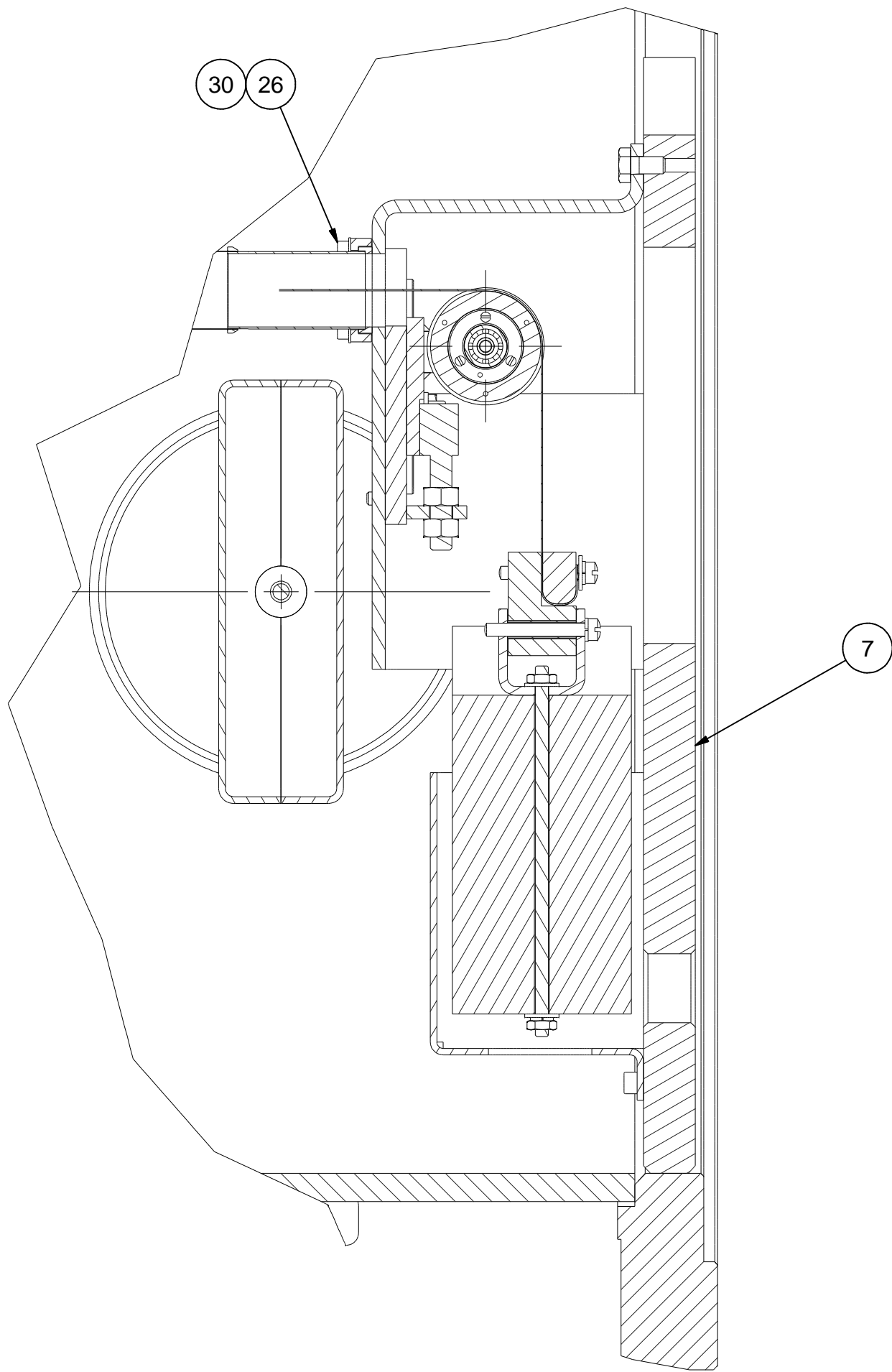


DETAIL C
(SEE SH. 1)
SCALE 1:2

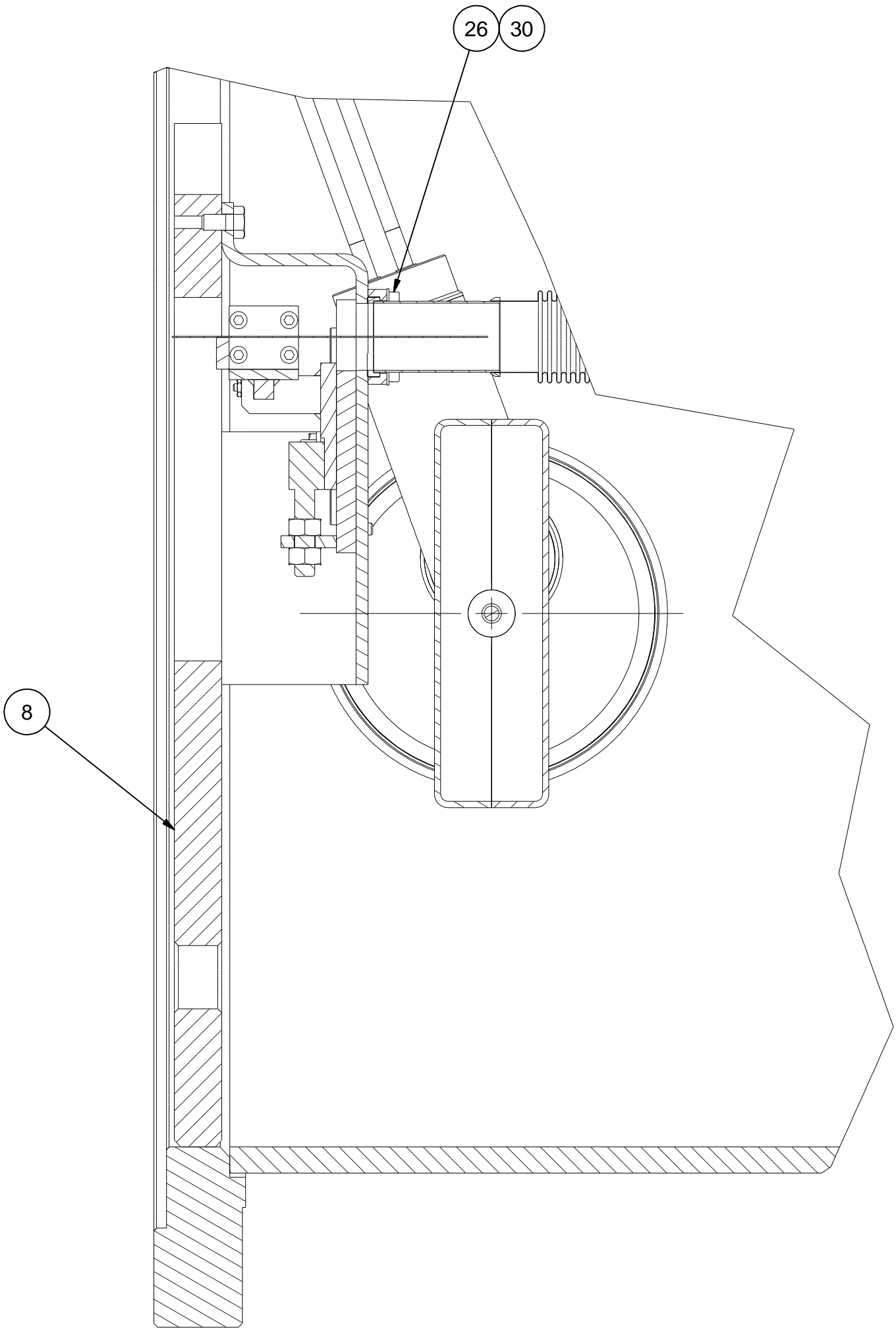


	ITEM	DWG. NO.	DESCRIPTION	G1	G2	G3	REMARKS	REV.
				QUANTITY				
 D	PRINT DISTR.	PLOT DATE: 2/1/08 CAD FILE NAME: 7102-102.idw						
	CR-1	<div>CORNELL UNIVERSITY  LABORATORY FOR ELEMENTARY-PARTICLE PHYSICS</div>			CORNELL UNIVERSITY Floyd R. Newman Laboratory Ithaca, NY 14853			
					ERL INJECTOR CRYOMODULE ASSEMBLY, STEP 13 ASSEMBLY, STEP 13: SECTION B-B; DETAIL C			
7102-102 SH. NO. 2 OF 3	UNLESS OTHERWISE SPECIFIED: DIMENSIONS ARE IN INCHES: TOLERANCES ON: .0 ± .02 .00 ± .010 .000 ± .005 FRACTIONS ± 1/32 ANGLES ± 0.5° ALL SURFACES 							
	CHECKED BY: VM APPROVED BY: VM	DRAWN BY VM	DRAWN FOR M.Liepe	DATE 1/28/08	SCALE D	7102-102 SH. NO. 2 OF 3	REV.	


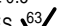

REVISIONS			
SYM.	ZONE	DESCRIPTION	DATE APP.



SECTION E-E
(SEE SH. 1)
SCALE 1:2



SECTION F-F
(SEE SH. 1)
SCALE 1:2

		ITEM	DWG. NO.	DESCRIPTION			G1	G2	G3	REMARKS		REV.
		QUANTITY										
<div>D</div> <div>SH. NO. 3 OF 3</div>	PRINT DISTR.	PLOT DATE: 2/1/08 CAD FILE NAME: 7102-102.idw										
	CR-1	UNLESS OTHERWISE SPECIFIED: DIMENSIONS ARE IN INCHES: TOLERANCES ON: .0 ± .02 .00 ± .010 .000 ± .005 FRACTIONS ± 1/32 ANGLES ± 0.5° ALL SURFACES 		<div><div>CORNELL UNIVERSITY Floyd R. Newman Laboratory Ithaca, NY 14853</div></div>								
				ERL INJECTOR CRYOMODULE ASSEMBLY, STEP 13 ASSEMBLY, STEP 13: SECTIONS E-E AND F-F								
REV.	CHECKED BY: VM	DRAWN BY VM	DRAWN FOR M.Liepe	DATE 1/28/08	SCALE	<div>D</div>	7102-102		REV.			
		APPROVED BY: VM					SH. NO. 3 OF 3					